

Commercial Red Sea Urchin Catch - 2000 - 2016*

*2016 data is preliminary Source CFIS 3.17.2917

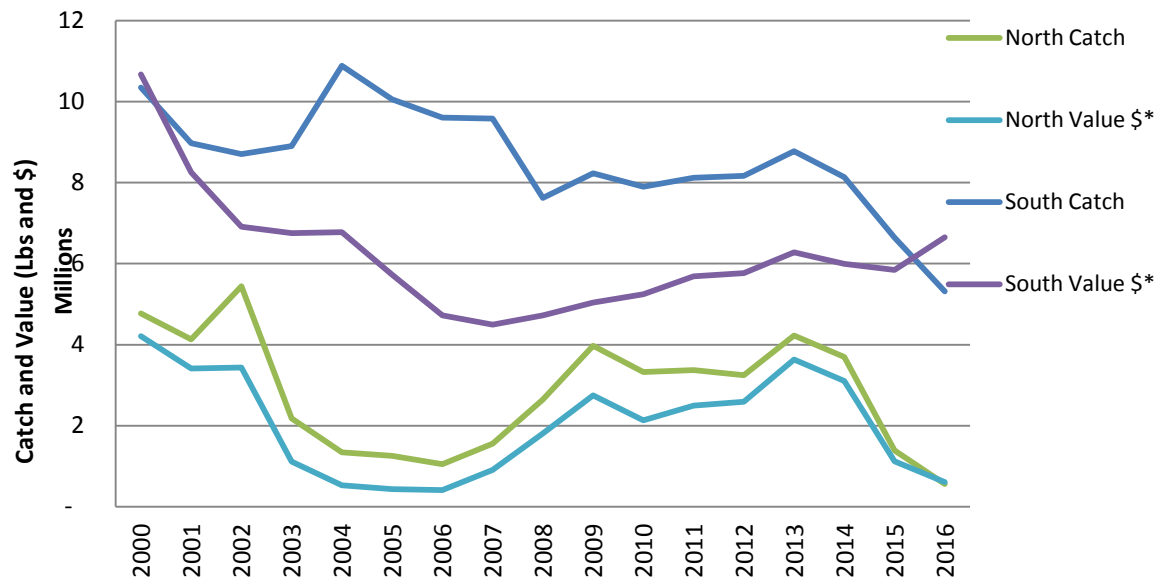
YEAR	Northern California			Southern California		
	North Catch	North Value \$*	\$/Lb*	South Catch	South Value \$*	\$/Lb*
2000	4,772,527	\$ 4,210,725	0.88	10,349,933	\$ 10,673,347	1.03
2001	4,128,976	\$ 3,408,316	0.83	8,972,766	\$ 8,254,466	0.92
2002	5,444,949	\$ 3,433,684	0.63	8,701,492	\$ 6,909,601	0.79
2003	2,181,693	\$ 1,116,134	0.51	8,901,405	\$ 6,752,016	0.76
2004	1,340,793	\$ 526,364	0.39	10,888,120	\$ 6,775,747	0.62
2005	1,252,796	\$ 437,896	0.35	10,052,393	\$ 5,722,458	0.57
2006	1,048,799	\$ 413,309	0.39	9,607,331	\$ 4,725,919	0.49
2007	1,554,137	\$ 907,674	0.58	9,582,804	\$ 4,494,005	0.47
2008	2,647,475	\$ 1,809,663	0.68	7,623,350	\$ 4,723,816	0.62
2009	3,971,796	\$ 2,752,290	0.69	8,228,287	\$ 5,035,583	0.61
2010	3,324,701	\$ 2,134,436	0.64	7,897,659	\$ 5,247,293	0.66
2011	3,369,032	\$ 2,493,167	0.74	8,122,693	\$ 5,685,039	0.70
2012	3,243,838	\$ 2,587,818	0.80	8,170,571	\$ 5,762,997	0.71
2013	4,228,917	\$ 3,632,850	0.86	8,773,605	\$ 6,281,143	0.72
2014	3,694,340	\$ 3,105,865	0.84	8,137,623	\$ 5,998,290	0.74
2015	1,393,209	\$ 1,117,393	0.80	6,642,103	\$ 5,847,323	0.88
2016	561,852	\$ 604,440	1.08	5,318,758	\$ 6,651,803	1.25

*not CPI adjusted

NC kelp canopy during this period declined from a high of 5.8 sq miles in 2008 to 0.26 sq miles in 2015 - not all years were surveyed

2016	561,852	\$ 604,440	5,318,758	\$ 6,651,803
2011-16	3,185,867	\$ 2,587,419	7,969,319	\$ 5,914,958
	-82.36%	-76.64%	-33.26%	12.46%

Commercial Red Sea Urchin Catch and Value for Northern and Southern California, 2000 - 2016



Data for Sea Urchin for 2010 to 2016

Year	San Diego	Dana Point	Total
2010	636,760	99,661	736,421
2011	640,432	104,742	745,174
2012	598,698	108,892	707,590
2013	470,057	90,276	560,333
2014	425,983	70,747	496,730
2015	361,182	26,928	388,110
2016	120,166	2,374	122,540
2010-15 Avg	499,270	80,317	605,726
2016	120,166	2,374	122,540
Decline	-75.93%	-97.04%	-79.77%

Dana point landing are	2% of normal	98% drop
San Diego landings are	19% of normal	81% drop
Total landing are	17% of normal	83% drop